

# MALAYSIA TATLER HOMES

THE INSIDER'S GUIDE TO LUXURIOUS LIVING

## A TIME FOR **CHANGE**

A big or small transformation in your  
abode can do wonders in terms of  
creative decor



VOLUME 3 • ISSUE 6 | RM20

- **THEME SCHEME** A PLAY ON POLYCHROMATICS • **CREATIVE SPACES** DISCO DECOR MAGIC
- **PROPERTIES** AN INVESTOR'S GUIDE TO PROPERTY INVESTING • **TECH TALK** SNAP HAPPY
- **OUTDOOR LIVING** GUIDE TO GREAT PATIOS • **DESIGNER BEAT** CULTIVATED PASSION
- **OUTSTANDING RESIDENCES** IN MALAYSIA, HONG KONG, INDIA AND THE PHILIPPINES

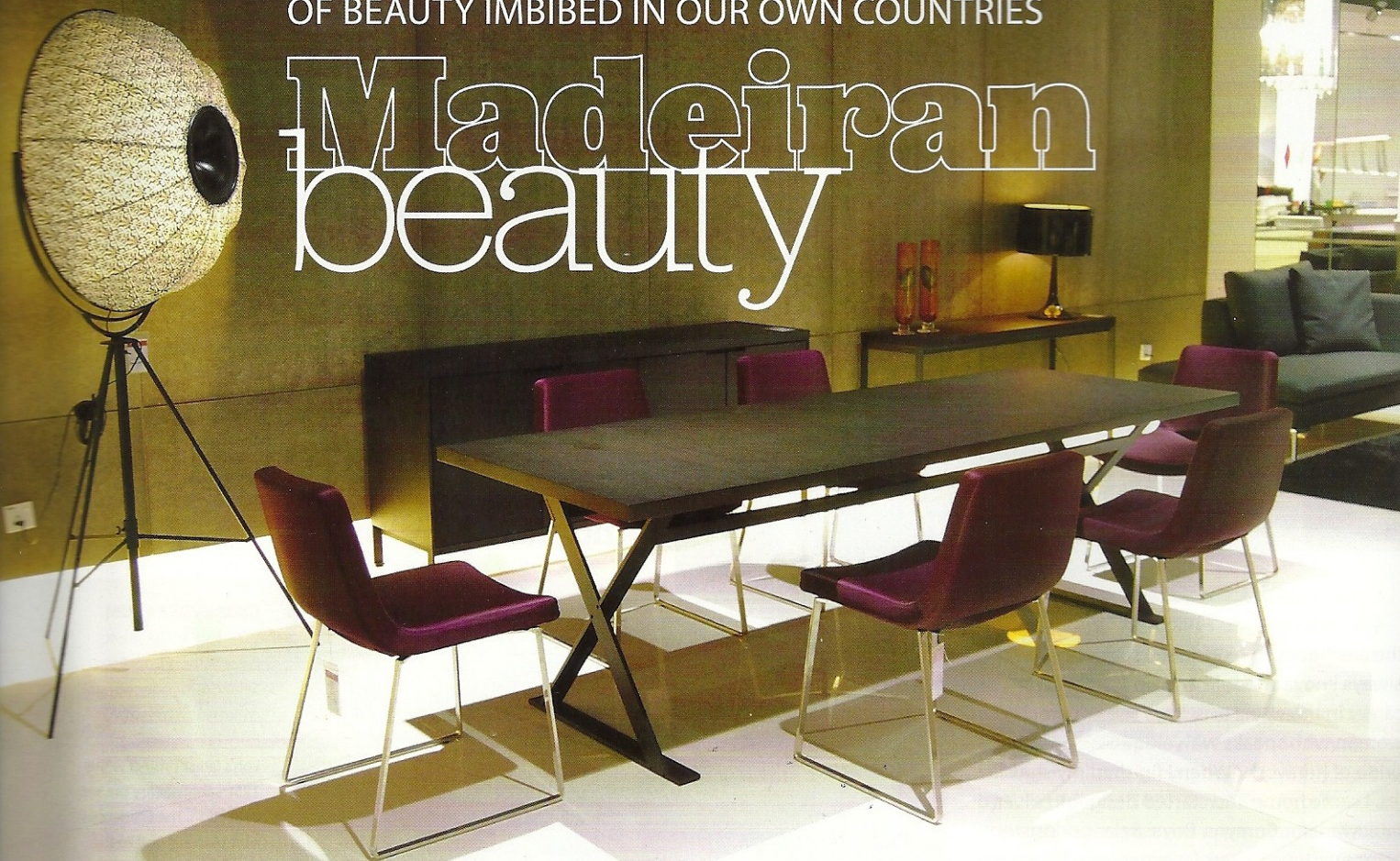


9 771985 740007



TRAVELLING OPENS UP OUR EYES TO NEW HORIZONS BUT NINI ANDRADE SILVA OPENS UP OUR EYE TO A WEALTH OF BEAUTY IMBIBED IN OUR OWN COUNTRIES

# Madeiran beauty



**FROM TOP:** Nini's work for HAUS at Tropicana City Mall; Nini Andrade Silva

**L**ooking serene and almost regal in her black dress and chic hat, Nini Andrade Silva is a picture of confidence and modesty as she explains her body of work and the connection to her roots. Nini Andrade Silva is a renowned interior decorator who grew from strength to strength and became a force to be reckoned with for her award-winning interior decorating and designs. Her success lies in the simplicity and uniqueness of the designs and the inclusion of her Madeiran roots. Growing up in Madeira, Portugal, surrounded by tropical islands and pebbled beaches, Nini soaked up her environment with a zest and embroidered pebbles as her main motif in her artwork and furniture.

Her foray into interior designing began in her schooldays when her friends approached her for help in completing their drawings.

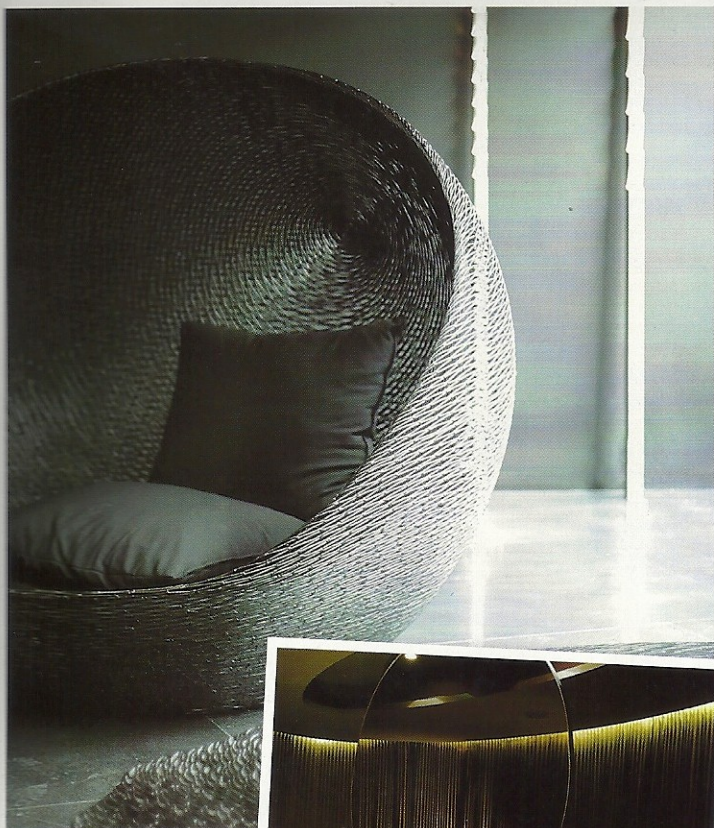
"My mother used to worry when I went home for school breaks, thinking I am burdened by school work, but what she didn't

realise was that I was actually helping my friends with their drawings," she recalls.

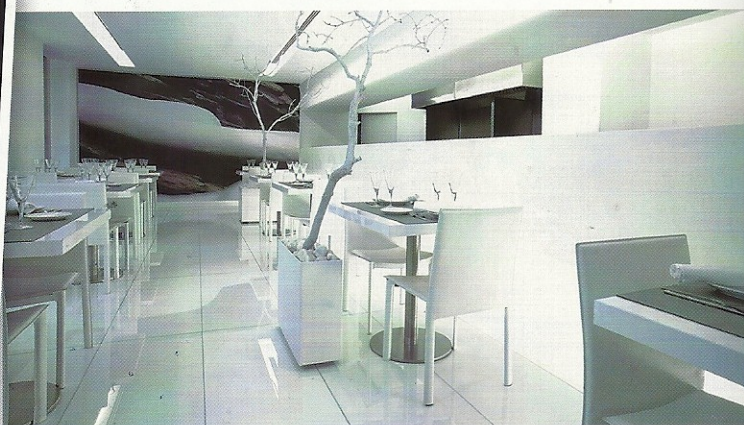
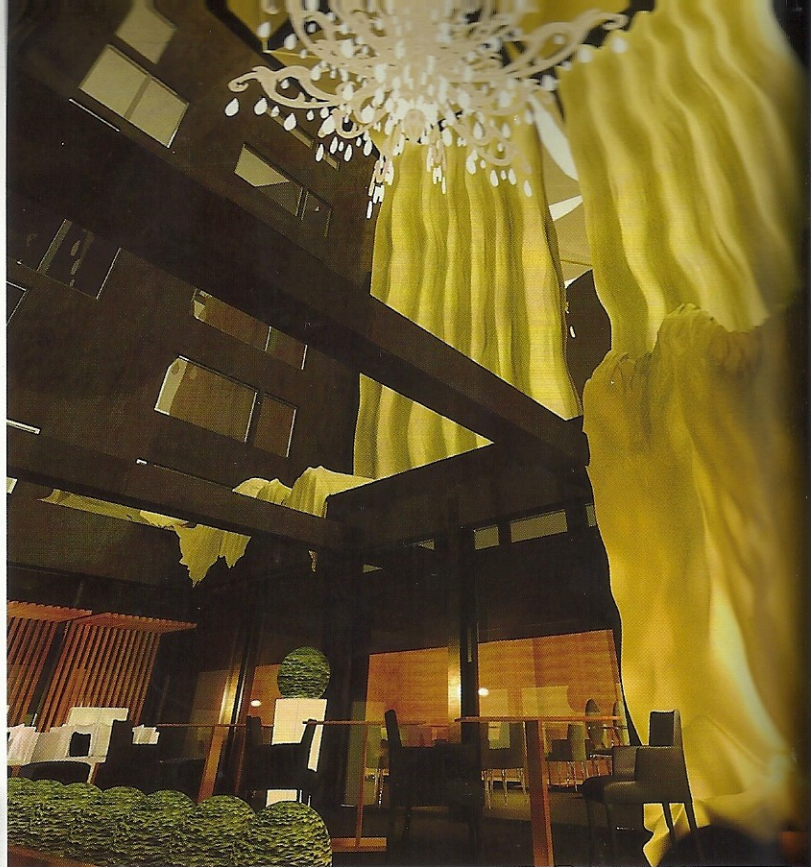
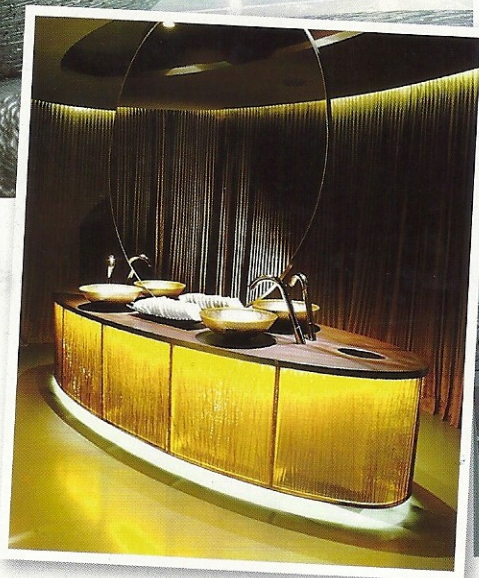
Nini explains the idea to fashion her art and furniture after the pebbles started when many years back, the kids used to walk on the pebbled street while waiting for tourists to visit – these kids were less fortunate and did not have many things on them, so she decided to do something to help them. "And when I grew up I started painting pebbles on big canvases and designing furniture after pebbles to help the children, and today I have my art collection, 'Girl of the Pebbles', and also a foundation under the same name to help the less fortunate kids," she adds.

The pebble plays a recurring theme in her life and forms the essence of her art collection and furniture range. It is proving a success not only in her award-winning interior designs, but her art collection themed 'Girl of the Pebble' has also garnered an overwhelming response. In 2002, Nina represented Portugal at 'Casa Décor 2002' in Barcelona with her painting collection, which was later exhibited





**ABOVE:** Four samples of Nini's portfolio for various spaces, such as the Fontana Park Hotel and for the World Architecture Festival  
**BELOW:** DUNA Bench, a piece designed by Nini



in Miami, Paris and New Delhi. Currently, her painting is included in one of the largest collections of Contemporary Art in the world. As the name suggests, the collection pays homage to and is dedicated to the pebbled beaches of her homeland.

Nini's award-winning designs adorn some famous hotels such as Hotel Teatro, Portugal, Hotel Rio Internacional, Brazil and The Vine Hotel, Madeira Island among others. The winner of 2010 Best Interior Design from Europe and Portugal at the European & Africa Property Awards and 2010 Best Design Award at the Malaysian International Trade Fair, to name a few, attributes her success to her Madeiran provenance, plus the simplicity and twist to her designs.

Nini adds, "In my long and gifted career I have designed hotels, private houses and offices but my work is more well-known in the hotel industry because hoteliers love my design for its distinctive quality and the life it brings to the hotels. You see less of my designs in private homes and offices because some cli-

ents do not enjoy the attention it draws; they prefer to be discreet."

At the private viewing held at Haus Living Concepts in Tropicana City Mall, Nini confessed that when she started out, she conformed to certain styles and trends but nowadays she has her own style which bodes well with her clients. When asked about her style, she says her name and the minimalist concept were fused and voila! the Nini-malist concept was born.

The Nini-malist combines a moderate approach in interior decorating added with a twist of Nini into every idea and furniture design. To Nini, what makes the Nini-malist

concept work is what she feels when she goes inside a certain place and that determines the type of design and idea for that area. Nini credits her inspiration as a gift from above and one observation is enough to understand that her designs are authentic and soulful.

"My inspirations are a gift thus I do not force myself to sit at a particular time and design. I've learnt that with patience and confidence the ideas will emerge," she says. "Translating these ideas into tangibility and seeing the sparkle of joy when clients like the end result is the most defining satisfaction I can get from doing what I love." 