

The Poetries of Hotels 诗意酒店

深圳市创扬文化传播有限公司 策划 徐宾宾 编



非凡的酒店

A Divine Hotel



葡萄藤酒店

The Vine Hotel

设计师: Nini Andrade Silva

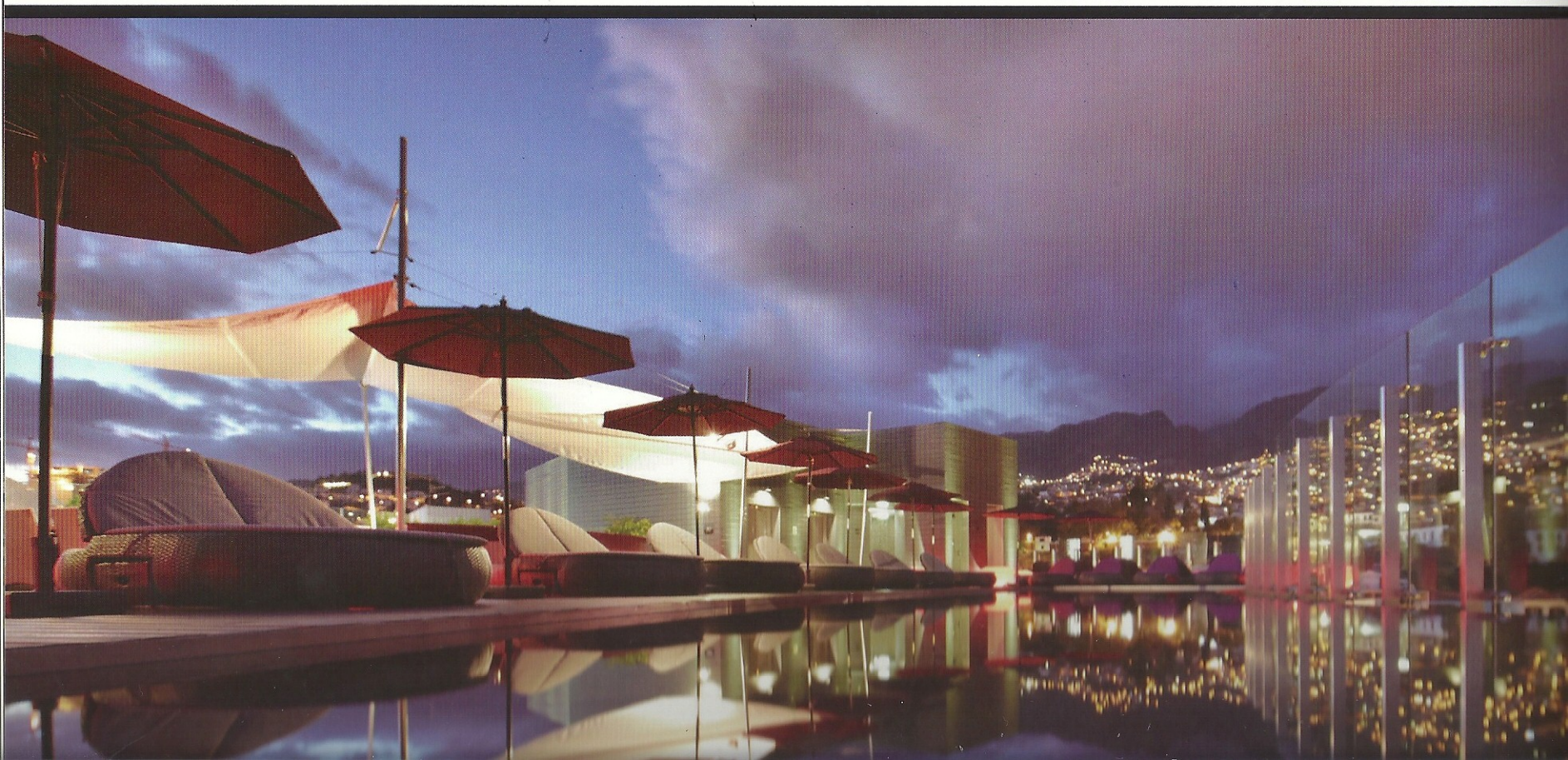
设计公司: Nini Andrade Silva Atelier Design

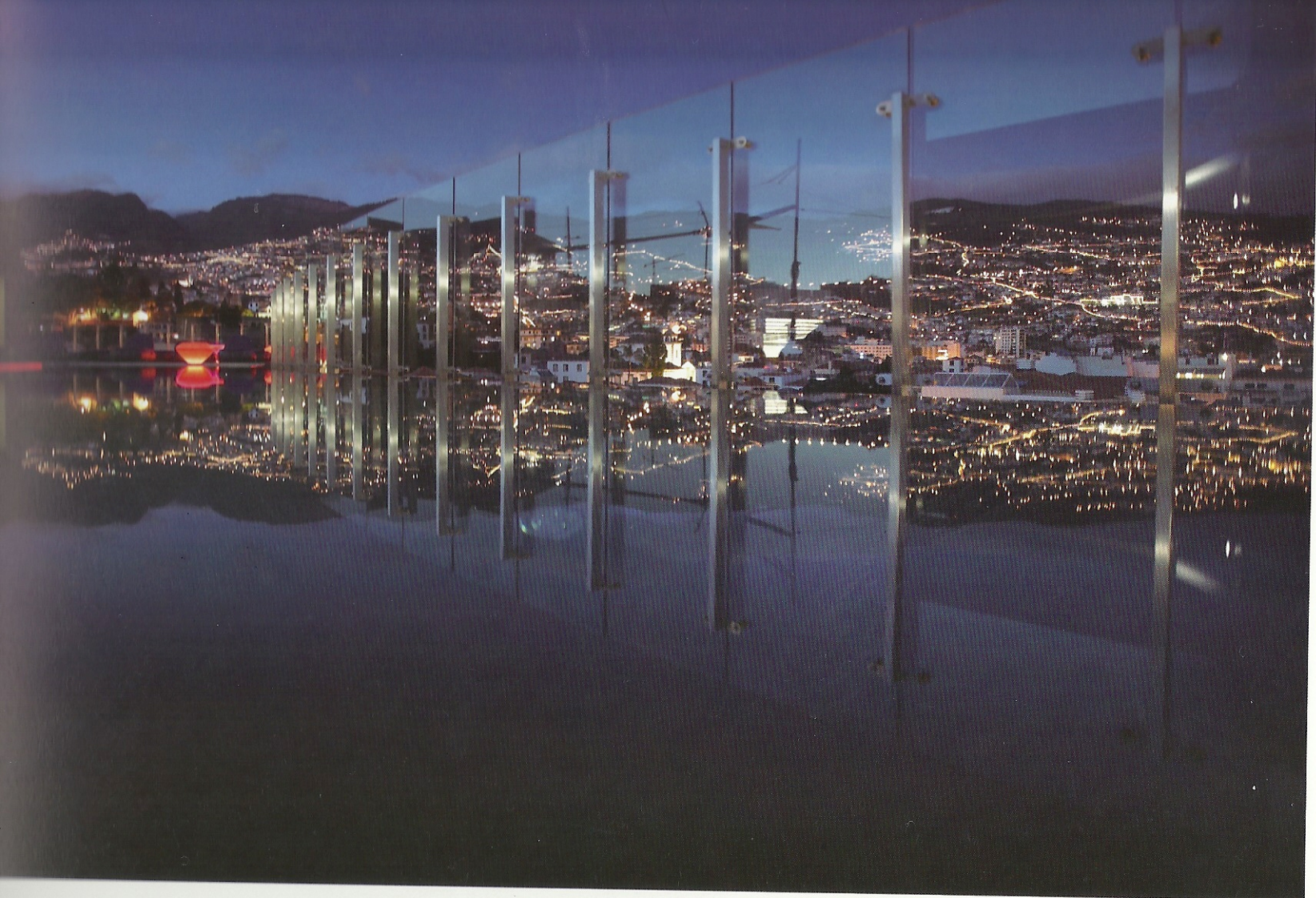
& Interior Architects International

项目地点: 葡萄牙马德拉群岛丰沙尔

项目面积: 1575平方米

项目摄影: Alma Mollemans、Henrique Ssruca





是优质的葡萄酒

如同

是优质的葡萄酒
如同血液一般

流淌着灵魂





A hotel with soul, just like a good wine. The Vine is sophisticated and luxurious. With a touch of simplicity and discretion, just the way you like it. The Vine Hotel was created on the concept as the name implies. Arriving at the hotel, the great purple staircase and metal mesh symbolize the summer rain, offering a warm welcome.

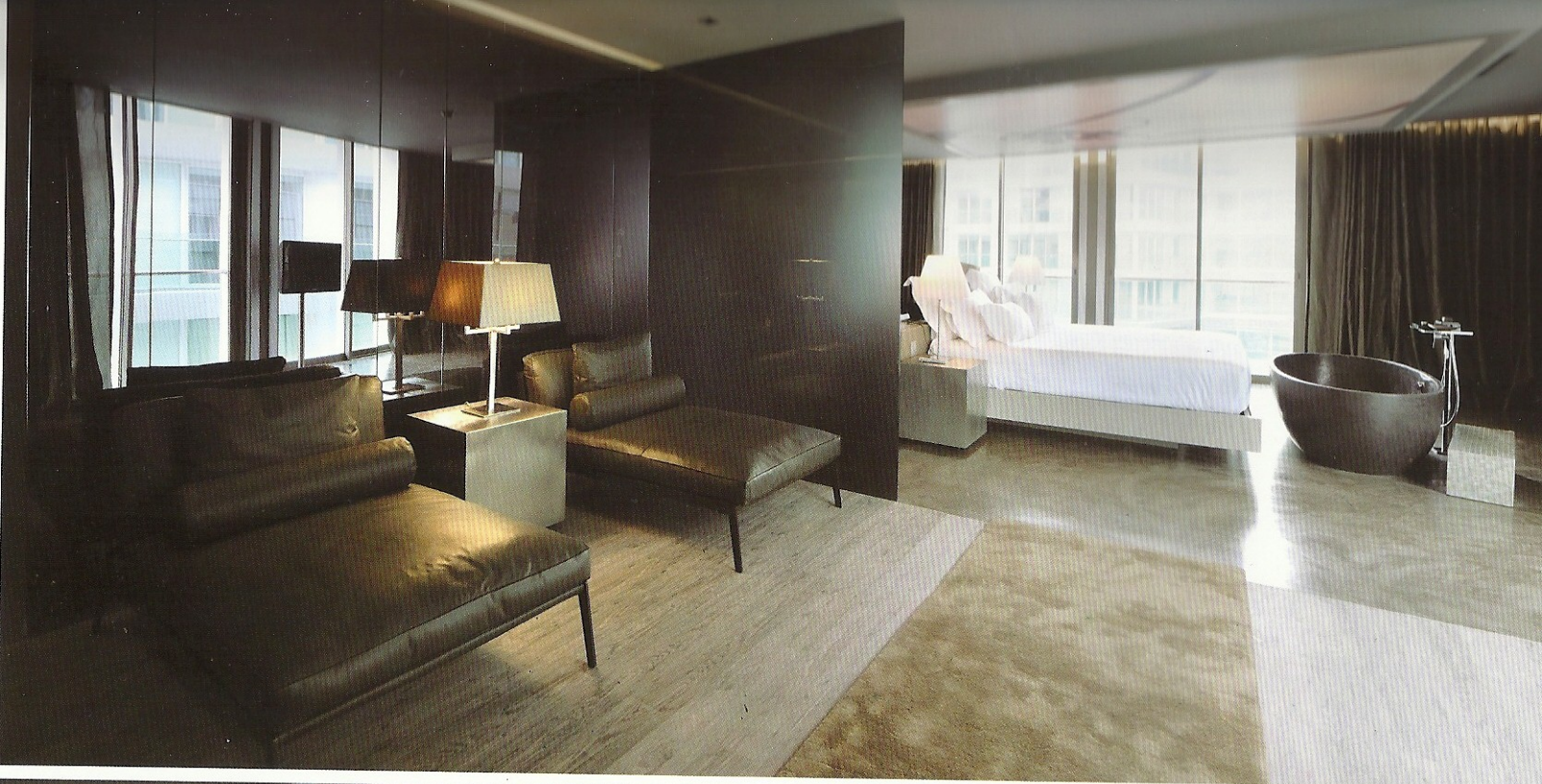
In the lobby, there's a garden with sofas like big baskets of harvest and the purple cushions, the color of the wine. The gnarled branches of the lobby lounge and the mulled grape guest room draperies are meant to set travelers thinking about the region's rich viniculture and the exuberant wild vegetation. The Terra Lounge Restaurant represents the vineyards. All the floor finishing is covered with small round pebbles, representing the unique pebbled beaches of the island. The bathroom facilities are in form of a grape, as if each box was a grape. Four floors of rooms color-coded to reflect the four seasons – green,

葡萄藤酒店犹如一瓶醇香优质的葡萄酒，血液中流淌着它的灵魂。葡萄藤酒店集繁复与奢华于一身，将些许简单的精髓和些许周到的考虑都融入设计之中。投其所好，满足客人对视觉和感觉的雙重要求。酒店的创意如同它名字的含义一样。到达酒店时，巨大的紫色台阶和金属网在欢迎你，宛如夏日瓢泼大雨般热切。

大厅中有一个花园，其间摆放着沙发，如同一个收获果实的大篮子，还有和葡萄酒一样颜色的紫色窗帘。大厅休息室里，粗糙树枝和葡萄酒红色的客房窗帘都可以让旅行者联想到该地区兴旺的葡萄酒酿造业和丰富的野生植物物种。Terra 休闲餐厅是葡萄园的象征。整个的楼层表面布满了小块的圆形鹅卵石，就像一片围绕小岛的独特鹅卵石海滩。浴室的设备都是葡萄形的，这里连每个盒子的形状都像一颗葡萄。4个楼层房间的色彩反映了四季——绿、灰、紫和褐，是各楼层的主色调。每层楼都传达着四季更替的感受。很快就到了葡萄成熟的季节，意味着你即将品尝到美妙的葡萄饮品。



















剧院酒店

Theater Hotel

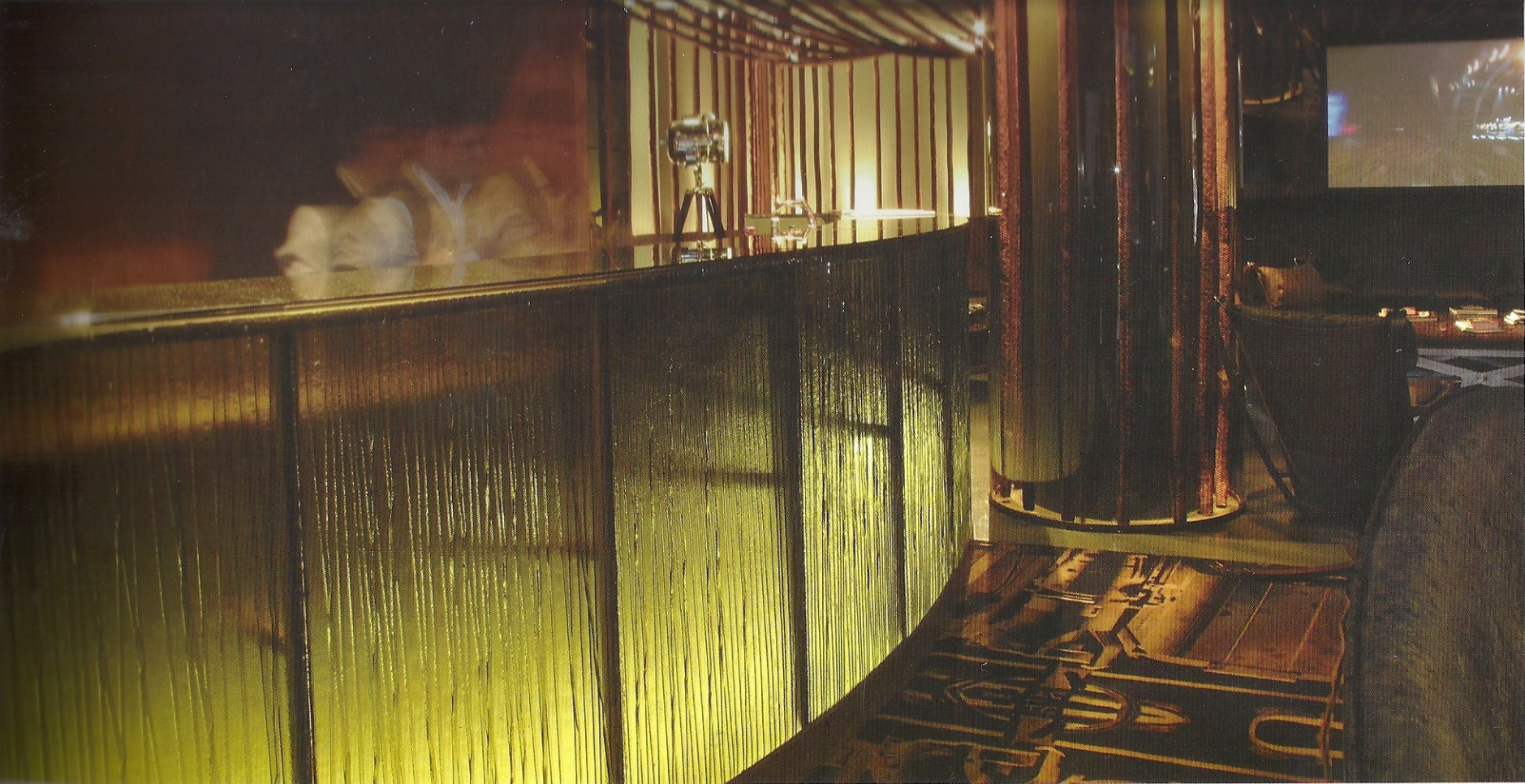
设计师: Nini Andrade Silva

设计公司: Nini Andrade Silva设计 & 内部建筑国际咨询工作室

项目地点: 葡萄牙波尔图市

项目面积: 5047平方米





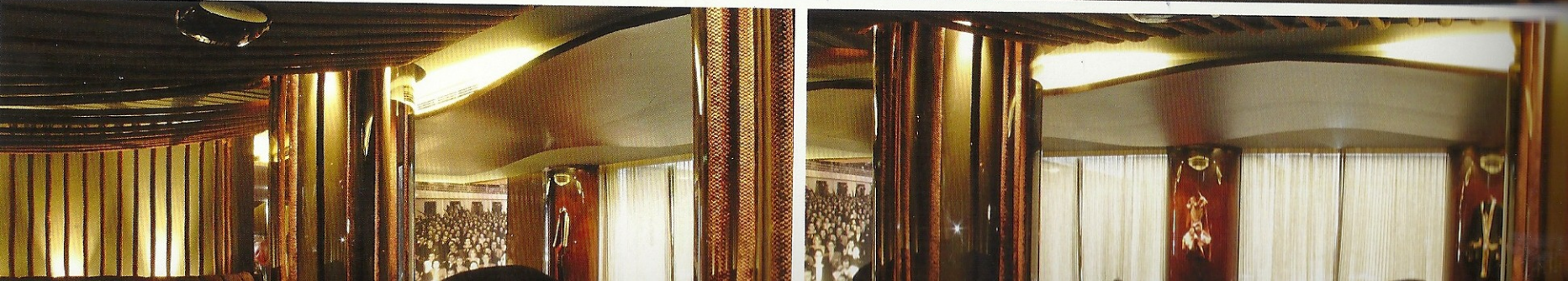
As a true concert hall, the bronze tones and simple textures embody all the interiors. The main entrance offers us an eloquent poem from one of the greatest Portuguese Poets of the century - Almeida Garrett. As the main door opens we are pulled into the box-office to buy our ticket granting us the access into the rooms.

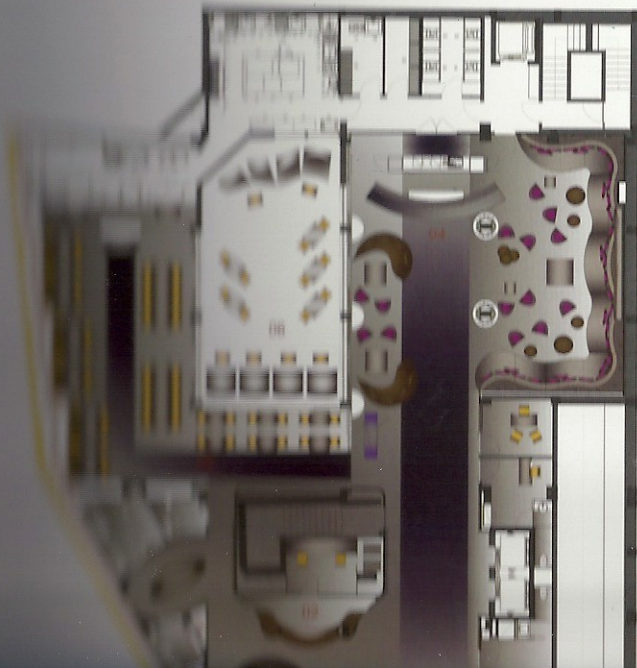
The restaurant is made from a palette of materials making its luxurious design possible, as a dream carved into reality. The furniture's design is a fusion of different design classics as well as a few surprises up their sleeves! The environment experienced in the bar takes us straight to any theater or opera, where the sofas design is inspired in the sixties and the countertops are made of recycled glass. Throughout all the space there are stage ropes as well as accessories and clothes belonging to famous artists who participated in the Filipe

La Fera shows, a famous Portuguese theater director.

Penetrating the walls and on the way to the rooms, the corridors are coated by large curtains in order to give intimacy and coziness throughout the hotel. The 74 rooms - Gallery, Tribune, Audience, Junior Suite and Suite - spread over the six floors, are comfortable and sophisticated with shades of gold and bronze.

As a permanent search between the space harmony and design, Nini Andrade Silva Atelier has created several furniture pieces totally inspired into the theater and performing arts world, such as the sofa in the reception which represents a film reel of Footage Theater with images from Filipe La Fera shows, scenic lamps, chairs similar to those used in ancient theaters. All over the hotel it is possible to find accessories and theater clothes belonging to famous theater artists and stand out the beautiful work on recycled glass in the bathrooms facilities.







金碧辉煌的乐府

金碧辉煌的乐府

跳跃与空间的每寸肌肤

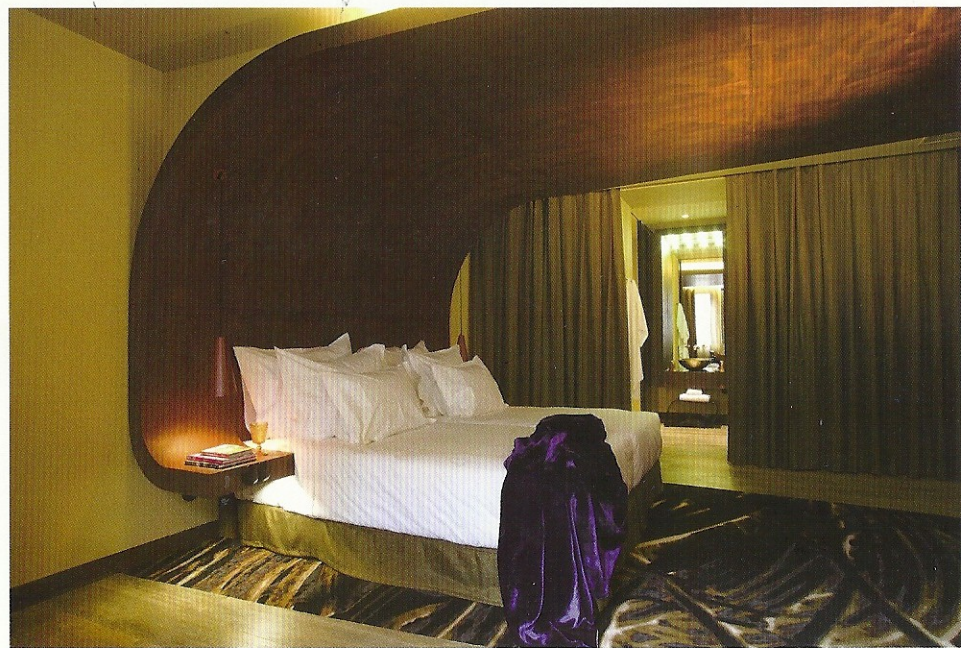


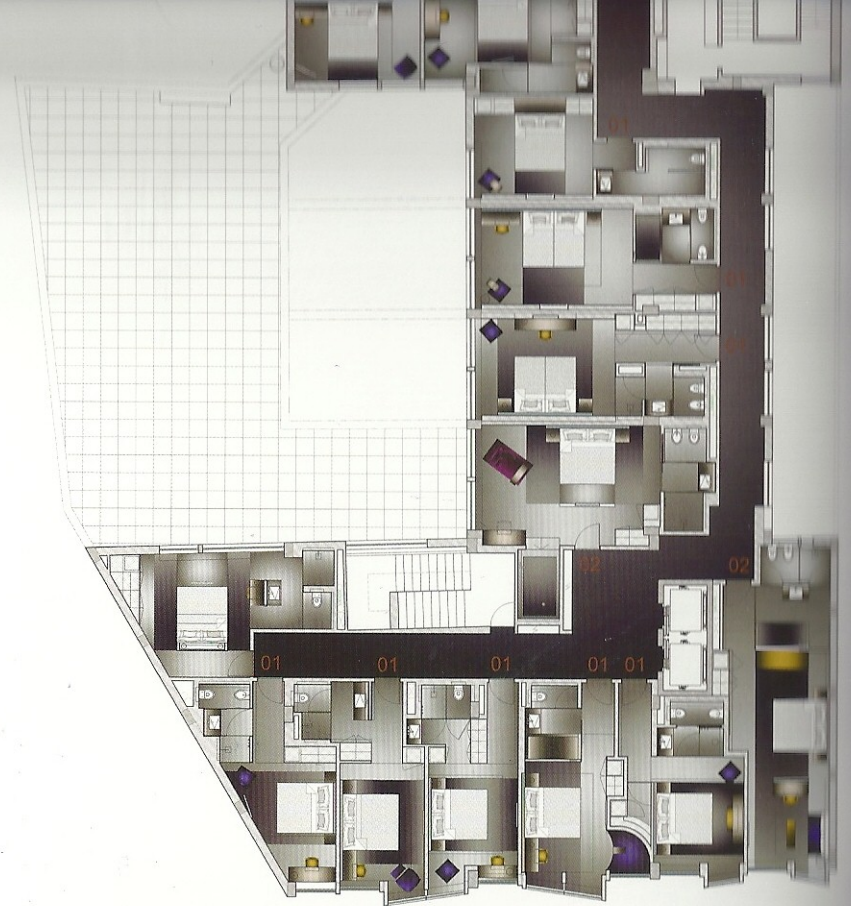
该

酒店就像真正的音乐会大厅，青铜色和简洁纹理是全部内饰的主打特征。主大门上雕刻了葡萄牙伟大诗人Almeida Garrett的一首动人诗篇。主大门一打开，人们即被引到售票处购买进入客房的票据。

用多种材料构建的饭店尽显华丽气派，仿如梦境雕刻成了现实。家具的设计融合了不同经典元素及一些新颖造型。酒吧的环境体验顿时将人们带到剧场或歌剧院，这里的沙发设计灵感来自20世纪60年代，吧













都市公园风情

Urban Park-style Hotel

■ 喷泉公园酒店

Fontana Park Hotel



设计师: Nini Andrade Silva

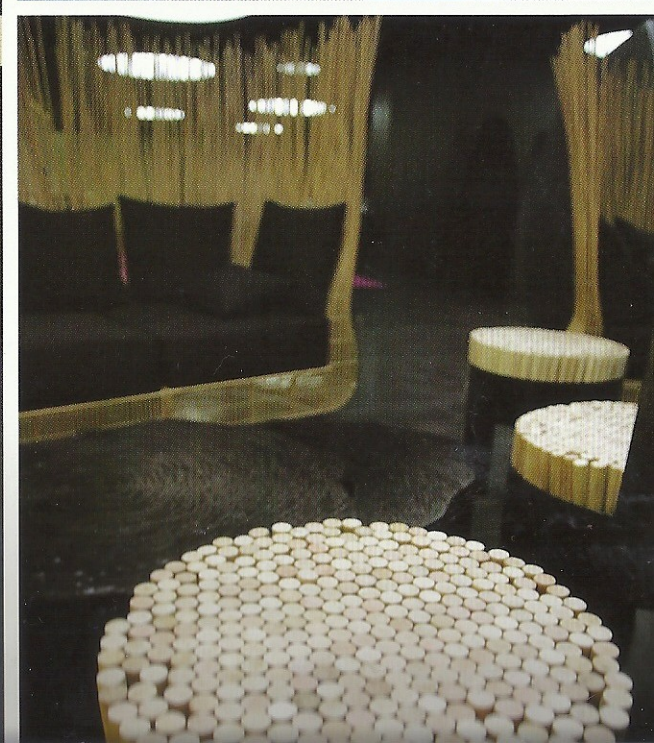
设计公司: Nini Andrade Silva设计&内部建筑国际咨询事务所

项目地点: 葡萄牙里斯本

项目摄影: Simon Frederick







Everything revolves around the name of the hotel – Fontana Park – an urban, cosmopolitan and sophisticated park. It is an urban hotel with contrasting, refined interiors. It has Ms Nini's signature with her 'Ninimalist' inspiration, contrasting design pieces with its enormous century-old roots transformed into installations. The social areas are very spacious, with a garden at the rear of the building.

The hall is the most monumental space, due to the height of the ceiling, yet it remains a welcoming and attractive space, with many interesting details. This is where everything starts. The reception area incorporates various iron elements in homage to the building's original function as a small factory for iron structures.

Windows generous in size and number assure that visitors are in constant communication with the dynamic urban landscape surrounding them, while an interior open-air courtyard – complete with waterfall and bamboo trees – references the green side of Lisbon. As the name itself suggests, nature and the park itself are the central themes, explaining why, aside from the use of black and white, the main color used is green. The criteria for the choice of colors were simple.









一切从这里开始





