

### Ready-Made String Curtains





# THEATER HOTEL BY NINI A UNIQUE INSPIRATION!

Name of Project: Theater Hotel

Location: Oporto, Portugal

Duration of the Project: 2 years





Nini Andrade Silva unveils its latest architectural and interior design project, the Theater Hotel, located in the historical downtown of Oporto, World Heritage Site by UNESCO.

As the name suggests, the Theater Hotel was developed around a concept directly related to its previous function, the legendary Teatro Baquet. The interior architecture and design project integrates all its history and respect for the space's soul, what comes to life as an elegant and subtle environment. The doors open, the curtain rises, and the show initiates a story that is told from the Hotel's within in to the heart of the city!

The interior design's concept was developed entirely based on the world of the arts and entertainment, it is felt in every room, area or detail of the Theater Hotel, where its lighting is a key element of the whole project, based on the notion of involving minimum visibility of the light sources. Nini Andrade Silva had implemented this concept for an ever-higher goal to let light give maximum rendering to the textures while having minimum intrusion to the architecture and interiors.







As a true concert hall, the bronze tones and simply textures embody all the interiors, which developed nuances of refinement and uniformity that extends to different floors of the building, simply becoming a shield hidden in the mysterious floors on the schedule of our trip ahead.

The main entrance offers an eloquent poem from one of the greatest Portuguese Poets of the century -

Almeida Garrett, just as a heartfelt tribute to one of the main personalities of the Portuguese

Theater and one of the greatest figures of Portuguese Romanticism. As the main door opens the visitors are pulled into the box-office to buy tickets granting them the access into the rooms.

Part of every entertainment experience is the atmosphere where it takes place! In the background, the restaurant and bar become themselves a stage with audience and his own privileged theater boxes which provide comfort and

privacy to the guests. The restaurant is made from a palette of materials making its luxurious design possible, as a dream carved into reality. The furniture's design is a fusion of different design classics as well as a few surprises up their sleeves!

The environment experienced in the bar takes us straight to any theater or opera, where the sofas design is inspired in the sixties and the countertops are made of recycled glass. Throughout all the

space there are stage ropes as, well as accessories and clothes belonging to famous artists

who participated in the Filipe La Faria shows, a famous Portuguese theater director. The show must go on and the next scene takes us to the interior patio where a huge chandelier gives the opulence and exuberance of the great theaters to the space. The warmth of colors adds vastness in this space and the continuity of space is emphasized through the interior patio, which allows the indoor bar space to virtually breathe through.











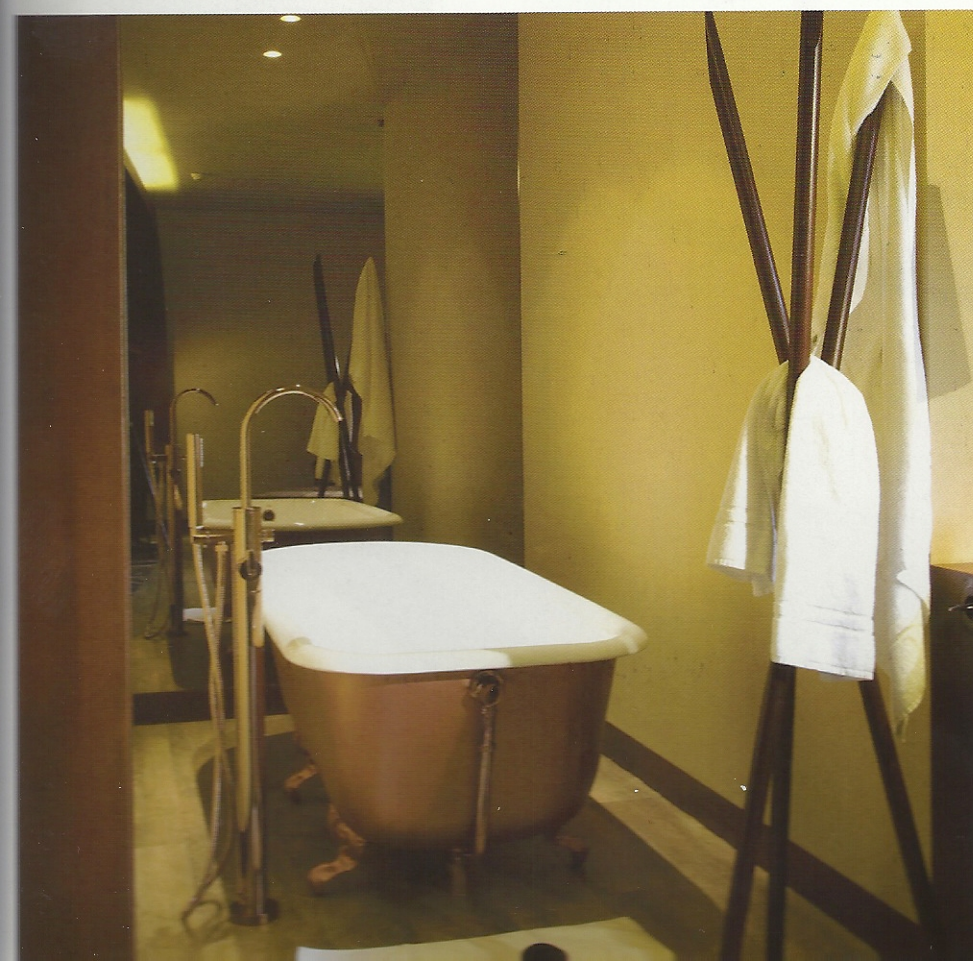
... e nos... se  
os meus  
tinham  
chama  
fogo  
az, eter  
o facho

no, etern  
mesmo temp  
le tão  
um só mó

eu sei  
os olhos  
de brilho  
de queima  
a ate  
no, divi  
do Desti

o! ... e sua  
o: mas gra  
fatal pode  
mento que





Penetrating the walls and on the way to the rooms, the corridors are coated by large curtains in order to give intimacy and coziness throughout the hotel. The 74 rooms - Gallery, Tribune, Audience, Junior Suite and Suite - spread over the six floors, are comfortable and sophisticated with shades of gold and bronze. Offering guests a wonderful variety of accommodation options made by modern amenities and a unique ambience, the bedrooms are similar to "perfect urban sanctuaries". The art sensation overflows inside the rooms which represent the obvious care for detail from Nini Andrade Silva. Into the bathroom facilities, which allows light into the bedroom through a glass surface, there are old bathtubs with bronze feet contained in glass boxes and there are chariots with theatre clothes as if it were true dressing rooms.

As a permanent search between the space harmony and design, Nini









furniture pieces totally inspired into the theater and performing arts world, such as the sofa in the reception which represents a film reel of Footage Theater with images from Filipe La Feria shows, scenic lamps, chairs similar to those used in ancient theaters. All over the hotel it is possible to find accessories and theater clothes belonging to famous

theater artists and stand out the beautiful work on recycled glass in the bathrooms facilities.

In a constant search for original details, the carpets reproduce authentic photographs and, at the entrance of the restaurant, the welcome is given by a great wall that represent the audience of the old theater, in which Nini changed

the faces of the photographed people to represent the faces of those who developed the project, including the owners of the Hotel, as a sort of surprise and discovery of "who's whom".

The Gym located on the top floor, again in shades of gold and bronze, transforms the hotel into a genuine relaxation or action space, 'in the heart of the city.











## WHO IS ATELIER NINI ANDRADE SILVA?

Nini Andrade Silva Atelier is a brand of international reference in design, furniture design and interior architecture consultancy on a high level of quality associated to an excellent hospitality service.

Directed by the designer NINI ANDRADE SILVA, their team work made by assistants, architects, interior architects, interior designers and graphic designers is divided through Lisbon and Funchal and they are currently engaged in several projects worldwide, related to hotels, private habitations, restaurants and offices.

Of their most recent projects they enhance:

The Aquapura Douro Valley Hotel, which is appointed by Harrods Magazine as one of the best 100 hotels of the world and it was recently included in Tatler Travel Guide of 2009 which makes a selection of the top 101 hotels of the world.

The Fontana Park Hotel, which has been considered by the judges of the European Hotel Design Awards as the Best Interior Design for Bedrooms & Bathrooms 2008 is also a member of

the Design Hotels. The Hotel is a great achievement of Nini's work and unrelenting search for the perfect conjugation between the human needs and the soul of the spaces she conceives and materializes.

The Hotel The Vine, a luxurious hotel in Nini's birthplace – Madeira Island, was awarded in the category of Interior Design from the European Hotel Design Awards 2009 and on the last 16th October in London, was also awarded with the Best Design in Europe. Following it come on the competition as the best candidate in the World. As important as the won awards was the inclusion in the short-list of the World Architecture Festival 2009.

The Theater Hotel, located in the historical downtown of Oporto, is the latest architectural and interior design project of the Atelier. As the name suggests, the Theater Hotel was developed around a concept directly related to its previous function, the legendary Teatro Baquet. The interior architecture and design project integrates all its history and respect for the space's soul, what comes to life as an elegant and subtle environment. The Hotel is already a serious candidate to the European Hotel Design Awards

2010, to the World Architecture Festival 2010 and to the European Property Awards 2010.

The demand for pieces of her authorship had originated the invitation to the development of unique pieces for international brands with design collections. By the production of our own interior and exterior furniture collection – Garota do Calhau Line - we can supply the design needs of our projects.

In addition to her work Nini has been actively engaged in develop a private painting collection also called Garota do Calhau. Her trade-mark aims to help the orphans arose from the name by which the poor and disfavored children that asked for charity on the streets of Funchal are called. Her paint works are showcased in Portugal in one of the greatest collections of Contemporary Art of the world belonging to Commander Joe Berardo and in museums of several countries such as Ireland and United States of America.

The consultation of her website [www.niniandradesilva.com](http://www.niniandradesilva.com) provides the access to additional information and illustrative images of some of her projects.